

TAKING
COOPERATION
FORWARD



SMACKER kick off meeting
Bologna | 8 May 2019

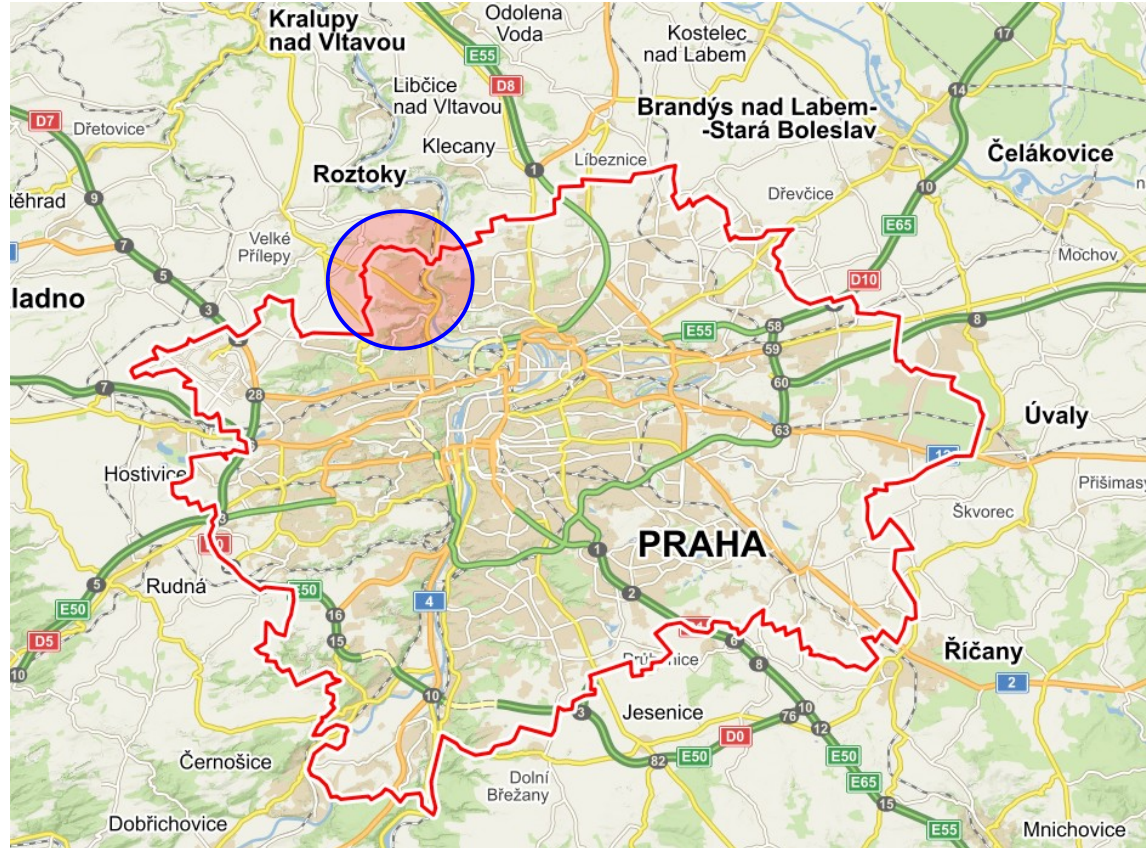


City District Prague Suchdol, CZ

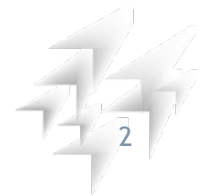


SMACKER | CZ | Gabriela Lněničková

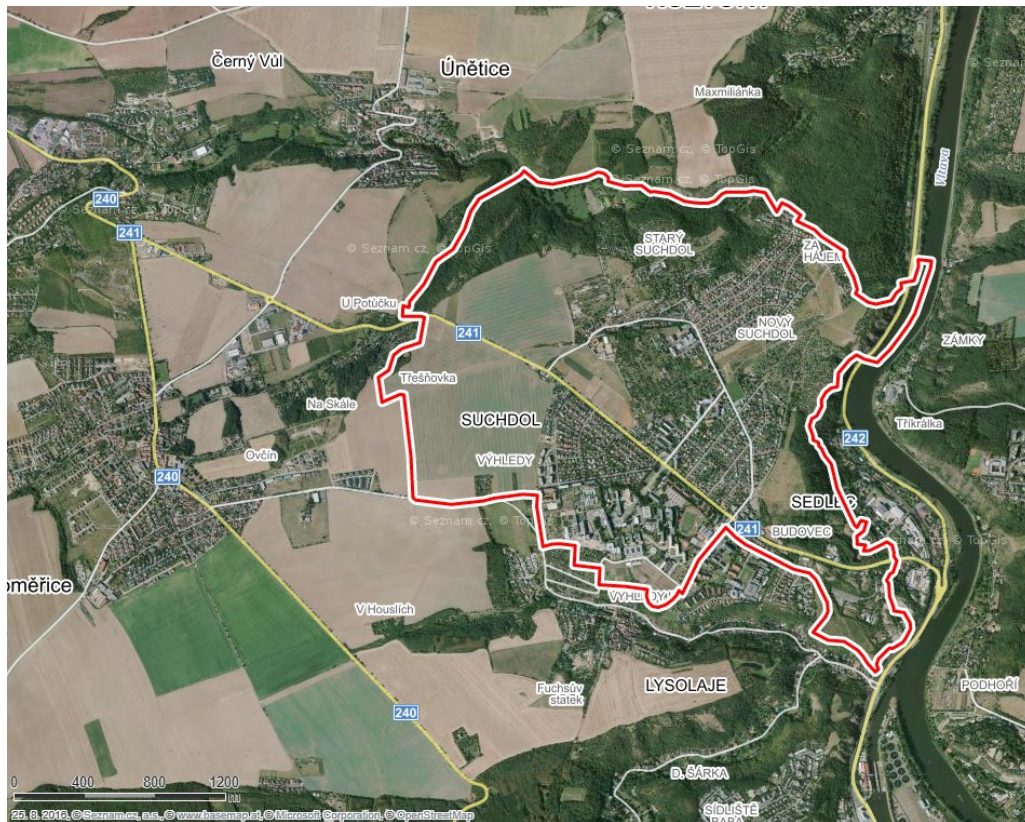
CITY DISTRICT PRAGUE-SUCHDOL, CZ



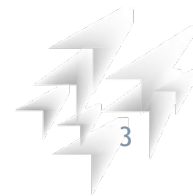
- **Location:** North-Western part of Prague
- **Area:** 513 ha
- **Population:** 7.100 inhabitants
- **Czech University of Life Sciences:** campus with over 20 000 students



CURRENT TRANSPORT IN SUCHDOL AREA



- Individual transport (car, bike, pedestrian)
- Public transport BUS
- Rail transport - international railway No.091 (Prague - Dresden - Berlin)
- Transiting car traffic from suburban area
- Air traffic



CITY DISTRICT PRAGUE-SUCHDOL, CZ

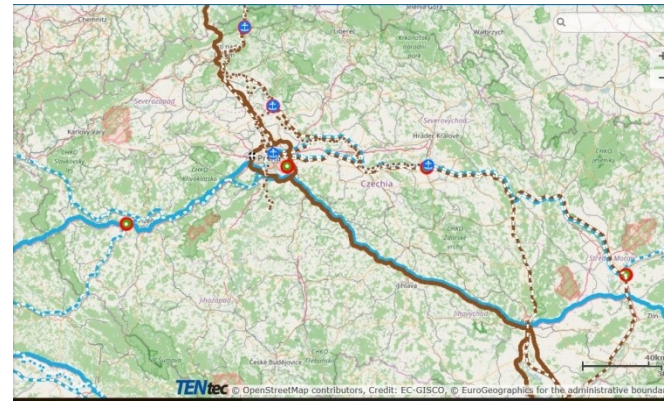
Public transport in Prague and its surroundings is organized by ROPID (Regional Organizer of Prague Public Transport) - (www.ropid.cz)

Thus Municipal District Prague-Suchdol:

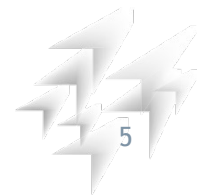
is not an authority that organizes public transport
is a recipient of public transport services
will present its experience as a recipient of public transport services
will examine new solutions for transport services in the area provided by public transport within a feasibility study



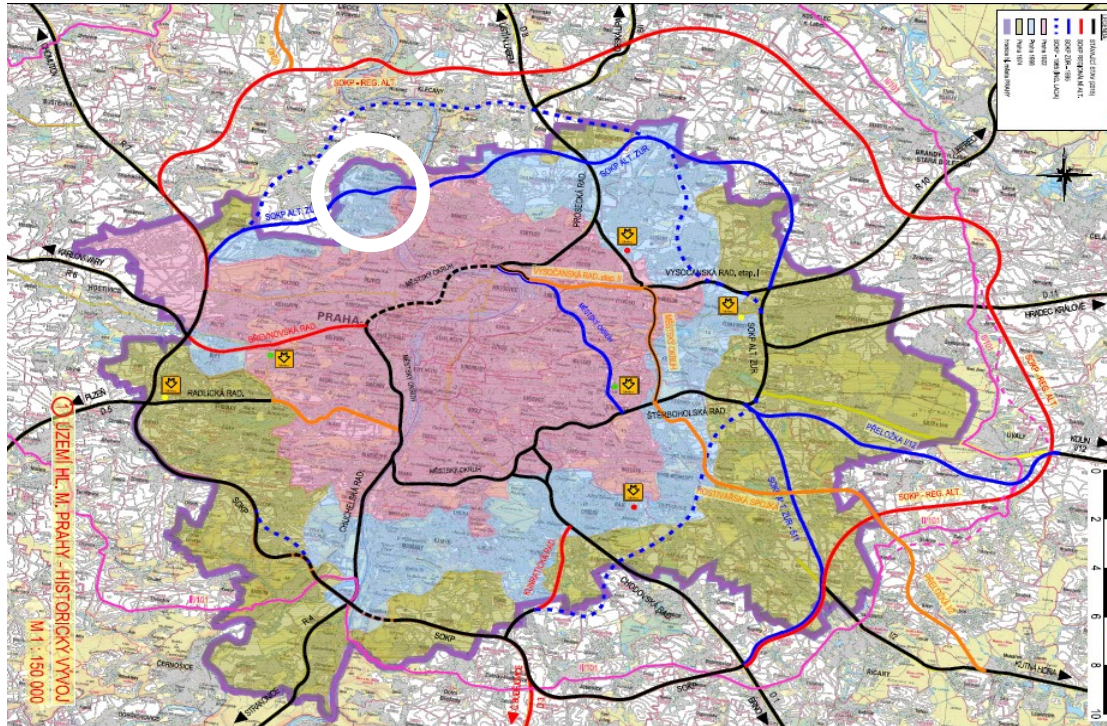
PLANNED MOTORWAY NETWORK IN THE CZECH REPUBLIC



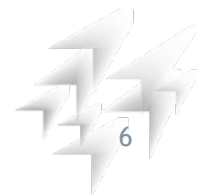
Prague Ring Road is part of IV multimodal TEN-T corridor Berlin – Prague - Istanbul



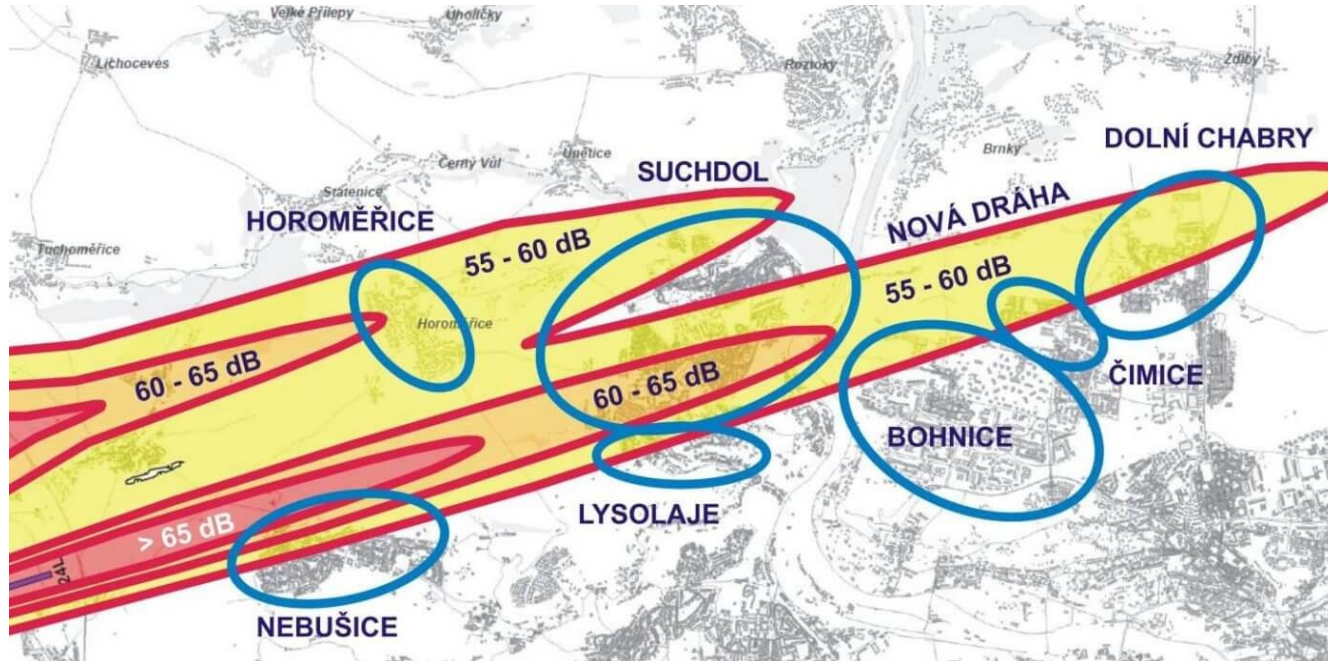
SUCHDOL WOULD BE AFFECTED BY PRAGUE RING ROAD



- Prague Ring Road is based on more than 50 years old plans
- It goes through the central part of Suchdol district
- Suchdol seeks alternative solutions



AIR TRAFFIC OVER PRAGUE - SUCHDOL



- existing air corridor RWY 06L24R
- planned air corridor RWY 06R24L
- Increased noise and air pollution



Our goal is to promote sustainable modes of transport and minimize negative environmental effects of the large planned projects.

City District Prague – Suchdol
Gabriela Lněničková
g.lnenickova@praha-suchdol.cz

