



MUNICIPAL DISTRICT PRAGUE-SUCHDOL

EPTA Project

**European model for Public Transport Authority
as a key factor leading to transport sustainability.**

**Kick-Off Meeting
BOLOGNA**

P11 - Municipal District Prague-Suchdol

February 28th – 29th 2012



European Union

European Regional Development Fund



MUNICIPAL DISTRICT PRAGUE-SUCHDOL

EPTA Project

**European model for Public Transport Authority
as a key factor leading to transport sustainability.**

Our EPTA Project's Motto says:

We are seeking a complex solution of transport services on the boundary of urban and suburban transportation, which is now burdened by the increasing transit road traffic in addition with air noise.

With regard to substantial planned supra-local traffic intentions in the area, it is necessary to create (examine) on the local level the following:

- a new concept of transport services in the area provided the environmental effects will be minimized which includes changes in the road system***
- a new solution for local transportation services with emphasis on a maximal limitation of emissions and noise.***



European Union
European Regional Development Fund



MUNICIPAL DISTRICT PRAGUE-SUCHDOL

EPTA Project

European model for Public Transport Authority
as a key factor leading to transport sustainability.

Public transport in Prague and its surroundings is organized by ROPID
(Regional Organizer of Prague Public Transport) - (www.ropid.cz)

Thus Municipal District Prague-Suchdol:

- *is not an authority that organizes public transport*
- *is a recipient of public transport services*
- *will present its experience as a recipient of public transport services*
- *will examine new solutions for transport services in the area provided by public transport within a study of feasibility.*



European Union
European Regional Development Fund



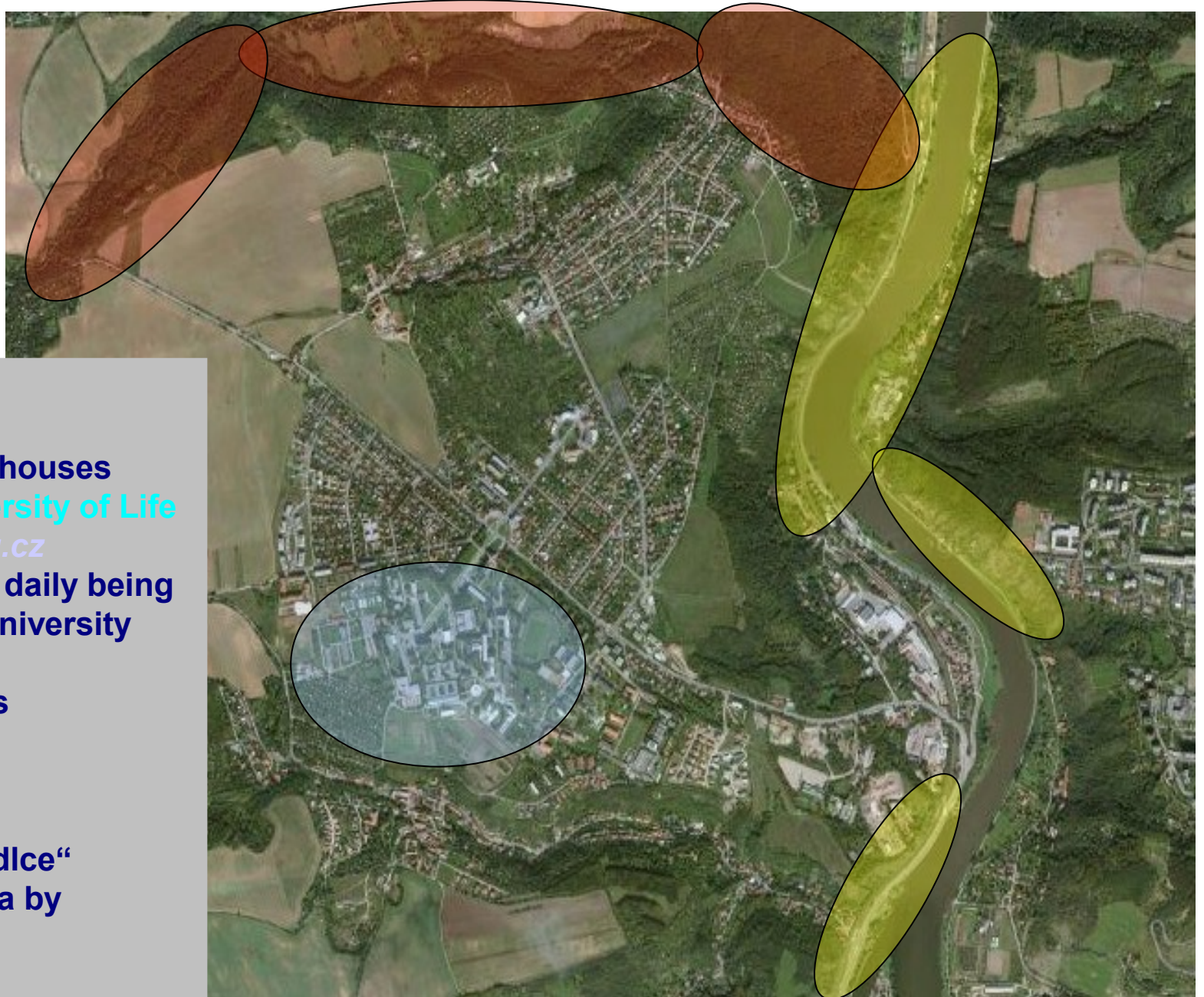
MUNICIPAL DISTRICT PRAGUE-SUCHDOL



Location: North-Western Part of Prague
Area: 513 ha
Population: 6.900 inhabitants
Budget: ≈ 1.100 000,- EUR



MUNICIPAL DISTRICT PRAGUE-SUCHDOL



Type of settlement

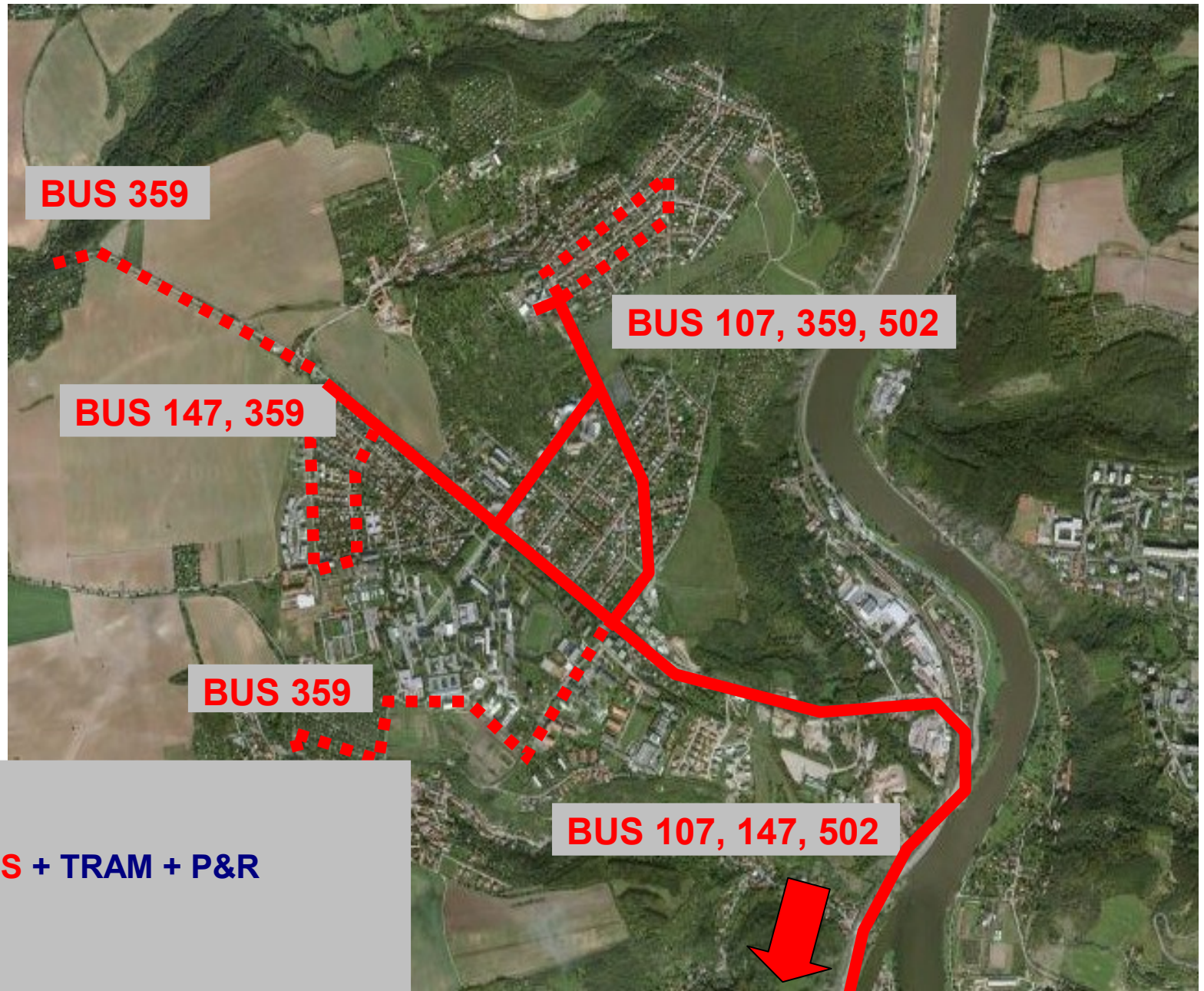
- housing and family houses
- area of **Czech University of Life Sciences** - www.czu.cz
- 10.000 students are daily being transported to the university campus
- no industrial estates

Protected areas

- **NATURA 2000**
„Kaňon Vltavy u Sedlce“
(Canyon River Vltava by Sedlec)
- **suburban green**



MUNICIPAL DISTRICT PRAGUE-SUCHDOL



BUS 359

BUS 107, 359, 502

BUS 147, 359

BUS 359

BUS 107, 147, 502

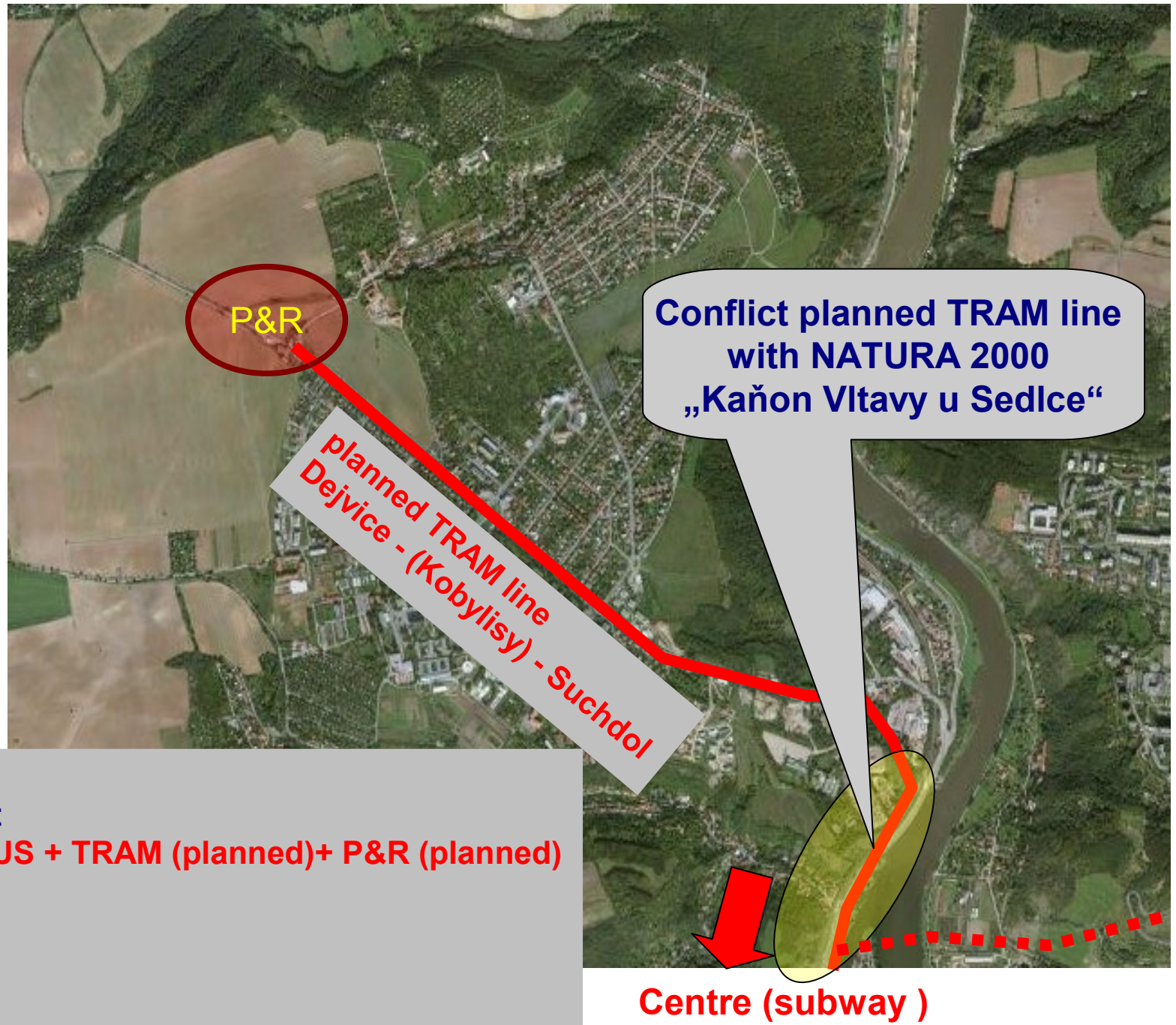


Centre (subway)

- Individual Transport
- **Public Transport BUS + TRAM + P&R**
- Rail Transport
- Transit Car Traffic
- Air Transport



MUNICIPAL DISTRICT PRAGUE-SUCHDOL



P&R

Conflict planned TRAM line
with NATURA 2000
„Kaňon Vltavy u Sedlce“

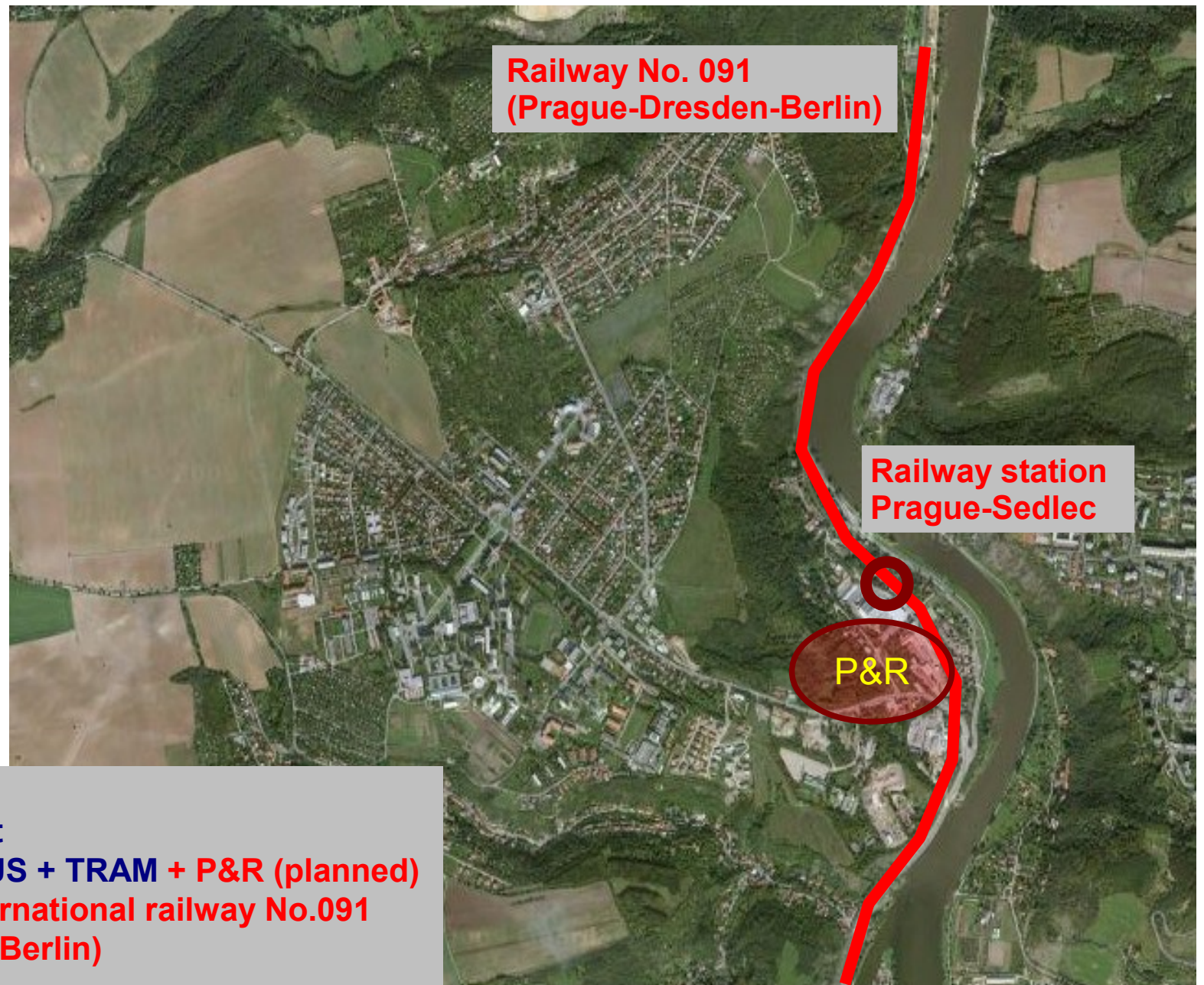
planned TRAM line
Dejvice - (Kobylisy) - Suchdol

Centre (subway)

- Individual Transport
- **Public Transport** BUS + TRAM (planned)+ P&R (planned)
- Rail Transport
- Transit Car Traffic
- Air Transport



MUNICIPAL DISTRICT PRAGUE-SUCHDOL



**Railway No. 091
(Prague-Dresden-Berlin)**

**Railway station
Prague-Sedlec**

P&R

- Individual Transport
- Public Transport **BUS + TRAM + P&R (planned)**
- Rail Transport - international railway No.091
(Prague - Dresden - Berlin)
- Transit Car Traffic
- Air Transport



MUNICIPAL DISTRICT PRAGUE-SUCHDOL

**Kralupy
nad Vltavou**



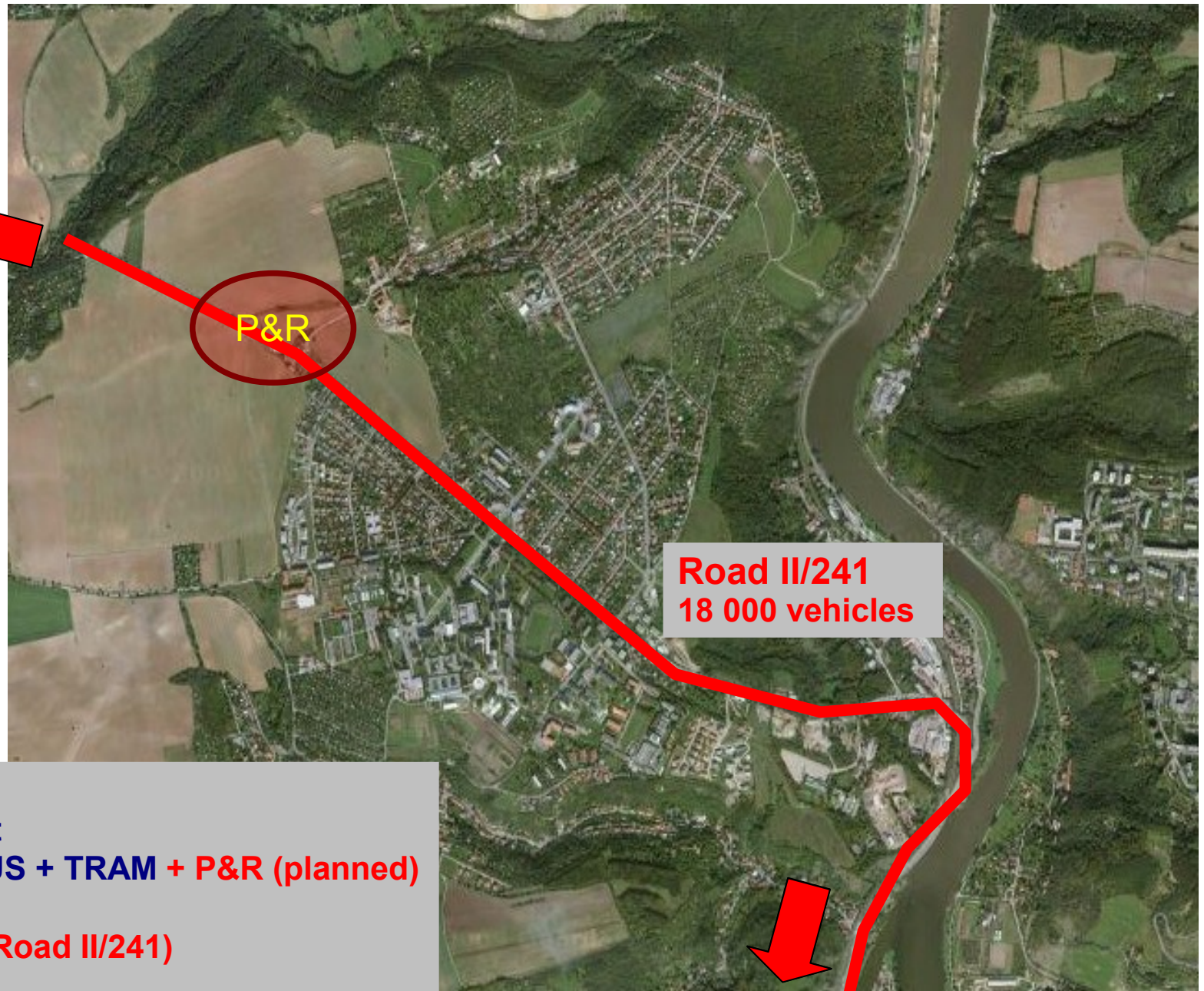
P&R

**Road II/241
18 000 vehicles**

- Individual Transport
- Public Transport BUS + TRAM + P&R (planned)
- Rail Transport
- Transit Car Traffic (Road II/241)
- Air Transport



Centre





MUNICIPAL DISTRICT PRAGUE-SUCHDOL

Hamburg

Stockholm

Moscow

Prague Ring Road

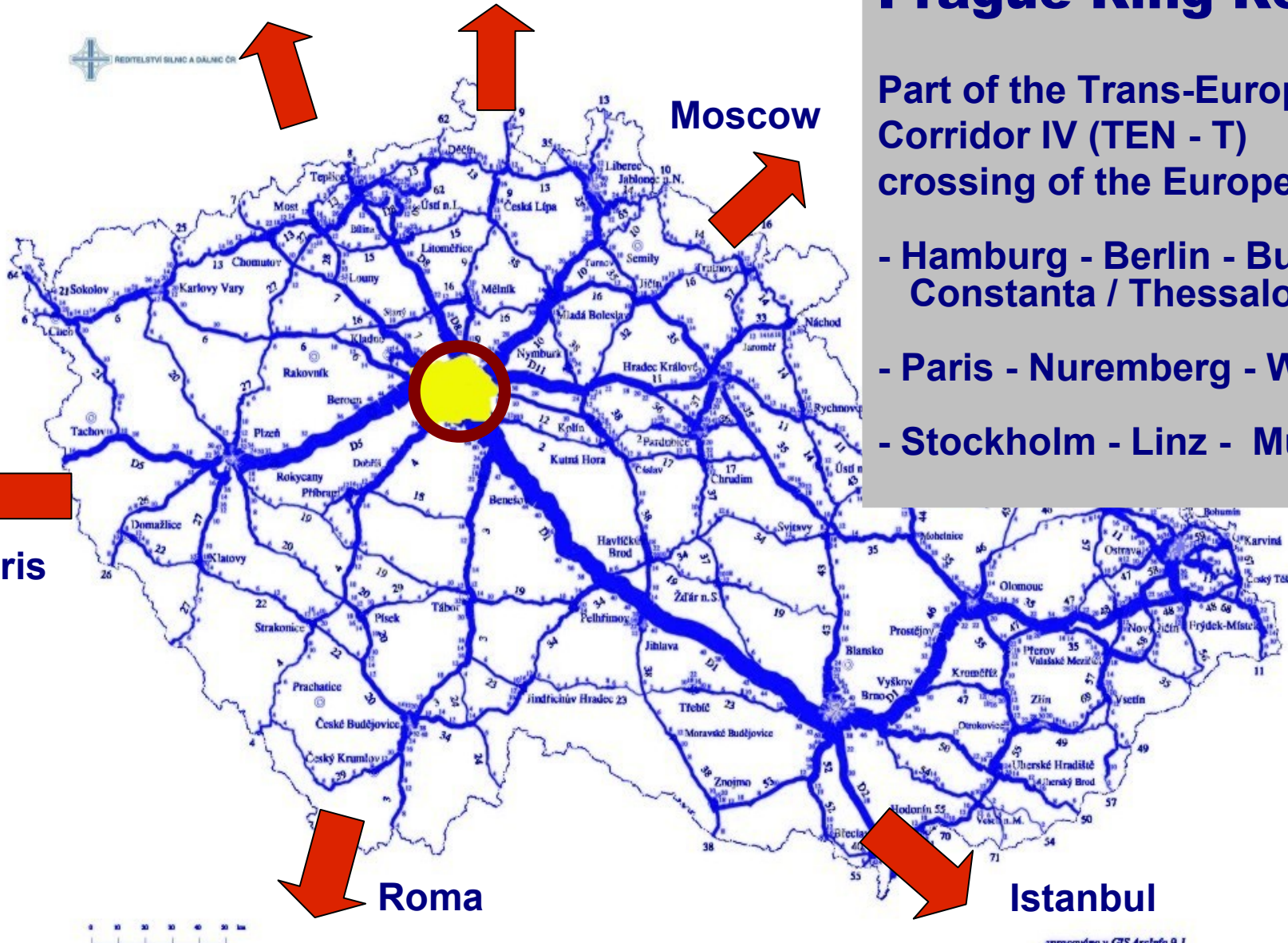
Part of the Trans-European Multimodal Corridor IV (TEN - T) crossing of the European motorways:

- Hamburg - Berlin - Budapest - Sofia - Constanta / Thessaloniki / Istanbul
- Paris - Nuremberg - Warsaw - Moscow
- Stockholm - Linz - Munich - Roma

Paris

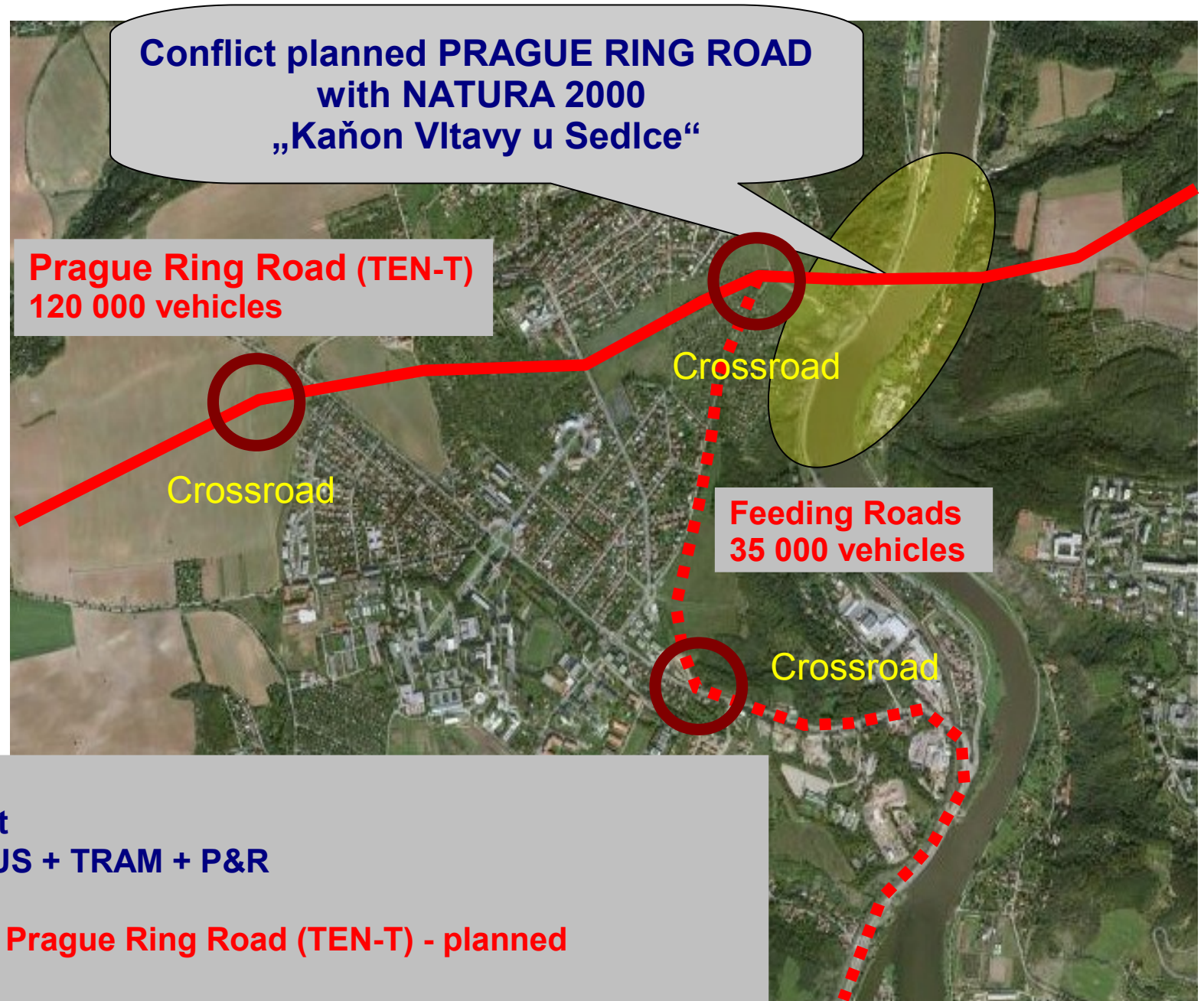
Roma

Istanbul





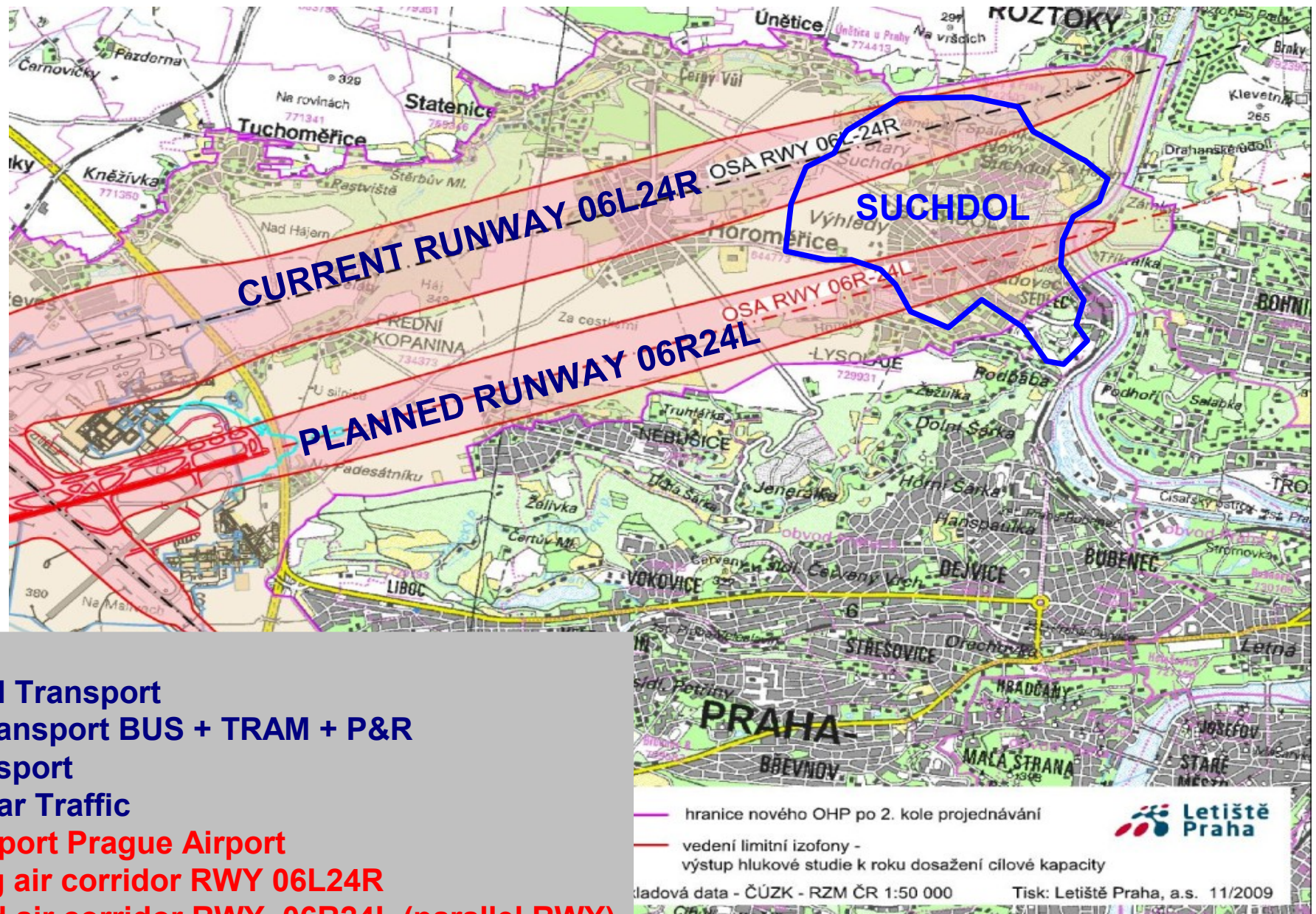
MUNICIPAL DISTRICT PRAGUE-SUCHDOL



- Individual Transport
- Public Transport BUS + TRAM + P&R
- Rail Transport
- Transit Car Traffic - Prague Ring Road (TEN-T) - planned
- Air Transport



MUNICIPAL DISTRICT PRAGUE-SUCHDOL



- Individual Transport
- Public Transport BUS + TRAM + P&R
- Rail Transport
- Transit Car Traffic
- **Air Transport Prague Airport**
 - **existing air corridor RWY 06L24R**
 - **planned air corridor RWY 06R24L (parallel RWY)**



MUNICIPAL DISTRICT PRAGUE-SUCHDOL



Thank you for your attention,

*Ivana Poláková
Petr Hejl*



European Union

European Regional Development Fund